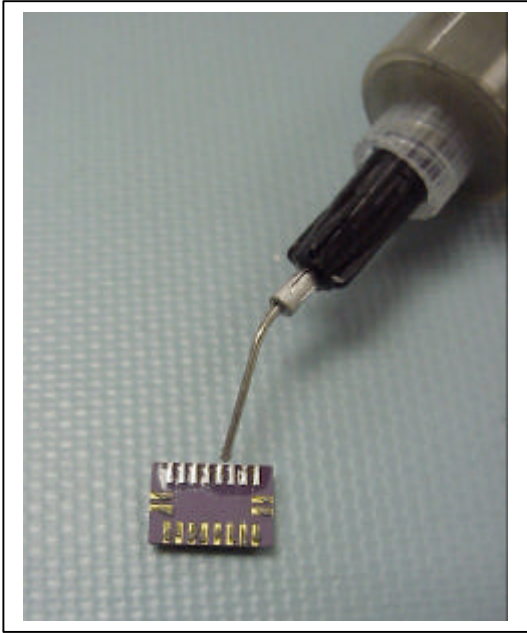
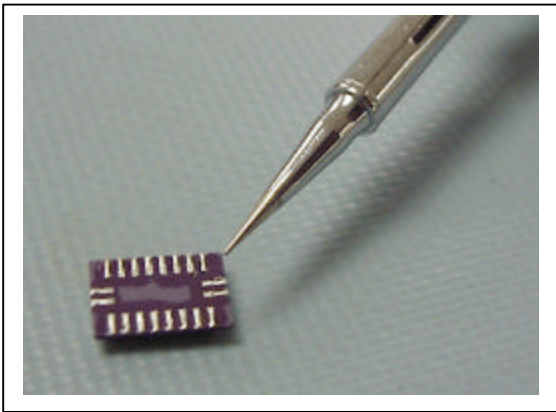


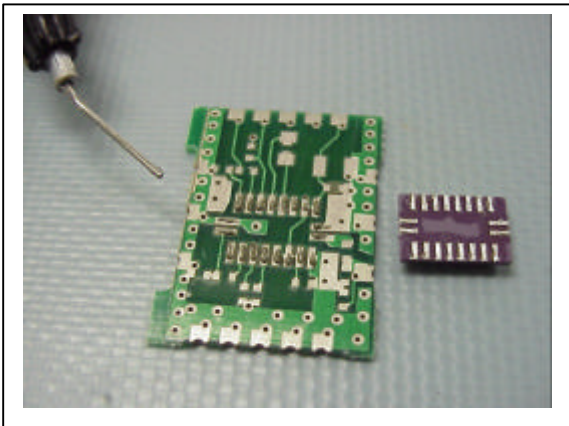
## Hand Soldering for TX, RX and TR



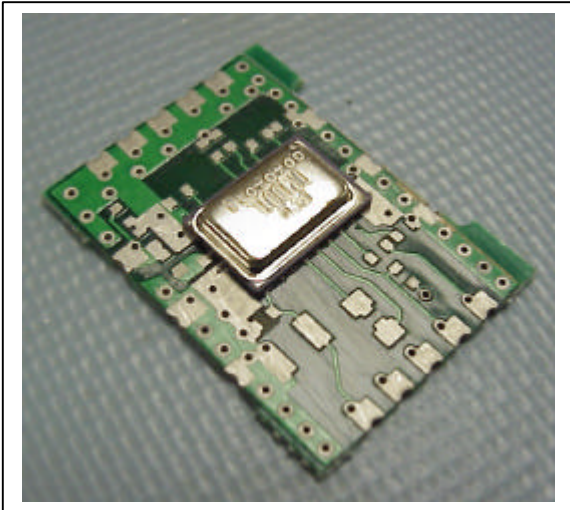
(1) Apply thin layer of solder paste to the module.



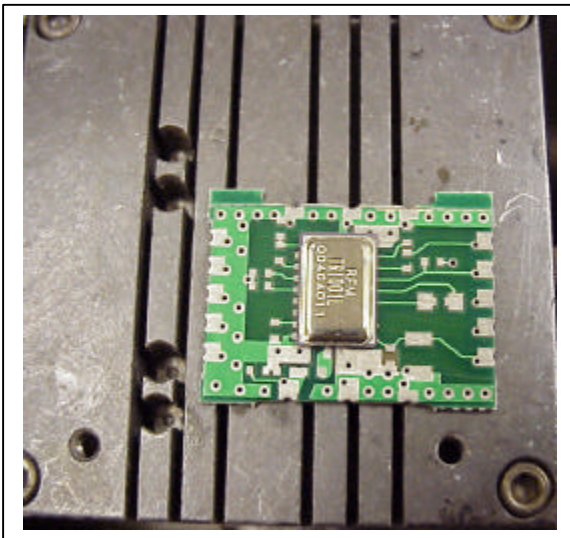
(2) Flow the solder paste by using a thin tipped soldering iron and wick off any excess on the pads.



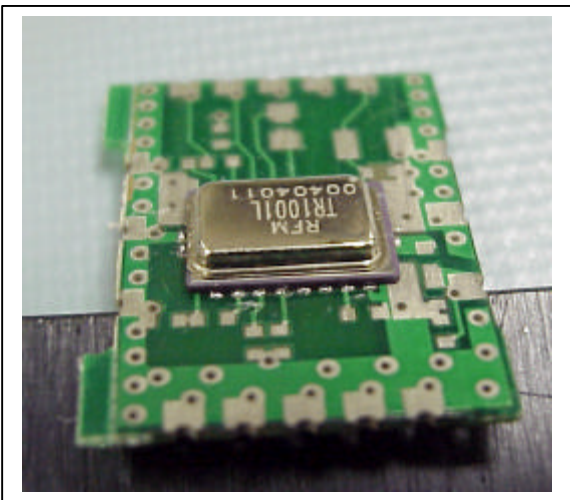
(3) Apply a thin coat of solder paste to the PCB.



(4) Mount pre-tinned module on the PCB.



(5) Place the PCBs on a Hot Plate till the tin is melted completely. Attain the recommended temperature of 180 to 190 degree C, tap the module to insure that there is no excess solder that could short out the various traces. Be sure that solder is visible at the edge of the pads for good soldering quality. For double side PCBs, please use hot air to mount the module.



(6) Cool the PCB with the modules at room temperature.